



RTMM MedEvac Dispatch #E001H
Equipment: Helicopter
Mountain Hiking Injury

Special RTMM Scenery Requirements:

- ORBX SAK
- The Western Chugach - Part 1
- RTMM Season Switcher must be set to Spring or Summer

Starting Location (& closer alternate): Soldotna, Alaska (PASX)
Helipad (closer alternate is Quartz Creek Airport (JLA) located in Cooper Landing, Alaska)

Dispatch Emergency Location: Crown Point, Alaska (near Moose Pass) at the Falls Creek headwaters @4200 Feet ASL. See local Map/Grid below. Coordinates are Crown Point/D-2 (SW Quadrant)

Destination: Providence Alaska Medical Center Helipad (AK38), Anchorage

Nature of Emergency: Glacier hiker injured from fall. Probable injuries are compound fractures & possible Head Trauma.

GPS Waypoint Setting: E001H

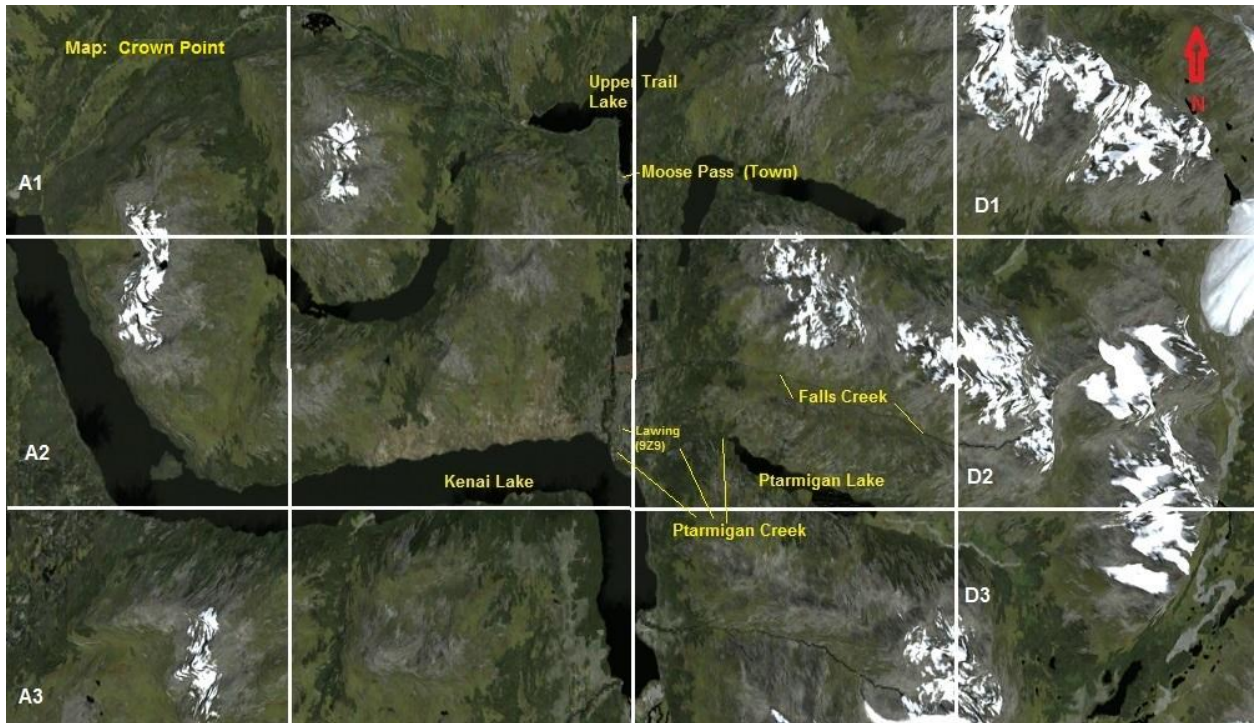
Topographical Link (Evac point is very close to the map center, use mouse wheel to zoom in/out, hold left click to move map): [Topo Map](#)

Approach Information: From West over Kenai Lake, turn North along Trail River and then quickly East, after passing Ptarmigan Creek (which flows down from Ptarmigan Lake) following Falls Creek (next visible creek after Ptarmigan Creek) through steep gorge and up high glacial valley to Glacier edge....rises to 5200' but evac point is at 4200', next to Falls Creek and just below snow line. Grade is steep recommend at least 3000 feet ASL after crossing Falls Creek Gorge. Will need to climb to 4500' ASL

minimum by evac point. Landing area is Mountain/Glacier/Rock . Slope is <10%. Orange smoke is marking the emergency site.

Notes: Another helicopter (ARMY) on site but can't transport.

Local Map:



Dispatch modified by Rod Jackson on 4/15/2015.