

FSCloud Manual

A simple "how-to" for downloading, installing, and connecting to FSCloud.

1. Visit the website - www.fscloud.net - and download the client

FSCloud Software

All you need for joining our community is a compatible flight simulator (FSX, P3D, XPlane10/11).

Download our FSCloud software, unpack and start flying.

[DOWNLOAD](#)

If running X-Plane11 – also download

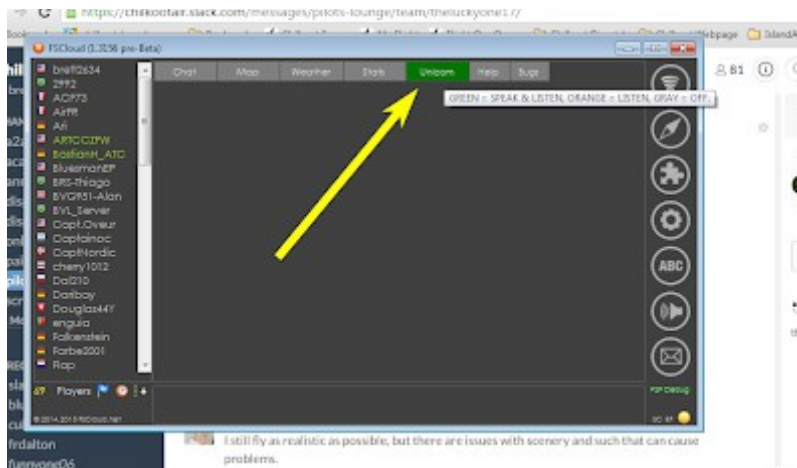
FSCloud XPlane11 Plugin with Installer

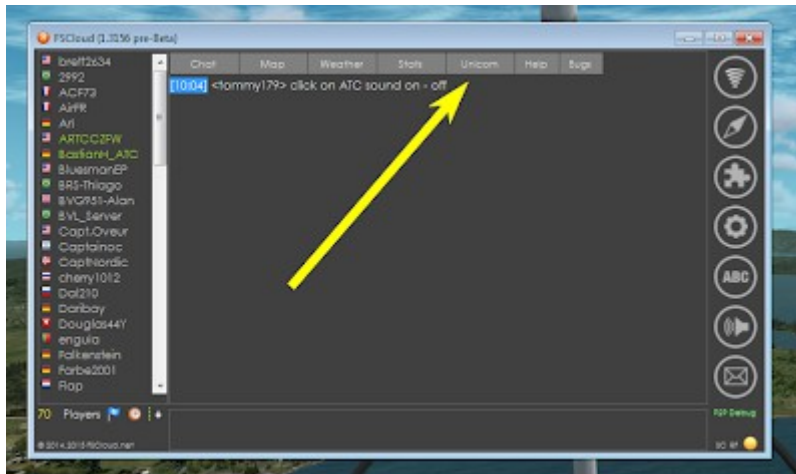
Users with XPlane-11 will need an updated FSCloud Plugin.

Download the plugin together with an installer file.

[DOWNLOAD](#)

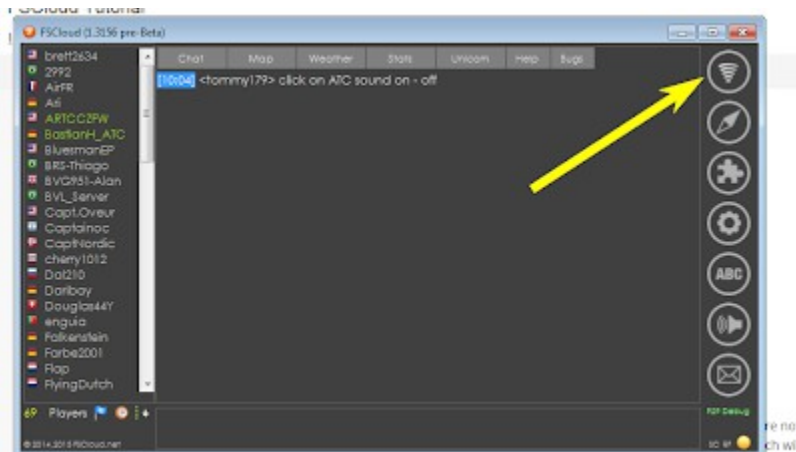
2. Install the program
3. Run your flight sim
4. Load your flight --- Make sure that you don't spawn on the runway, use a parking spot.
5. Run FSCloud
6. Turn the unicom off - click the unicom button twice to change it from green to grey





7. Tune to the Chilkoot CTAF - 122.10

First, tune your comm 1 radio in your aircraft to 122.10 - this will work 50% of the time. If you are not transmitting on this frequency, then open the ATC overlay and enter 122.10 in the lower box and click on the "COM1" text, which will change it to green temporarily



Tips and Tricks: (will be updated asap)

- Turn off the ATC bot
- Model Matching
- PTT
- Volume Control