



**RTMM MedEvac Dispatch #E002H
Equipment: Helicopter
Heart Attack Victim at Resort**

Special RTMM Scenery Requirements:

- ORBX SAK
- The Western Chugach - Part 1
- FSX/P3D Season & RTMM Season Switcher need to be set to Spring or Summer

Starting Location (& closer alternate): Soldotna, Alaska (PASX)
Helipad (closer alternate is Quartz Creek Airport (JLA) located in Cooper Landing, Alaska)

Dispatch Emergency Location: Lakeview, Alaska (south of Lawing (9Z9)) at Renfro's Lakeside Retreat parking lot. See local Map/Grid below. Coordinates are Crown Point/C-3. Lat/Lon Coordinates: N60 21.3530, W149 21.3772

Destination: Providence Seward Medical & Care Center Helipad (AK01), Seward, Alaska.

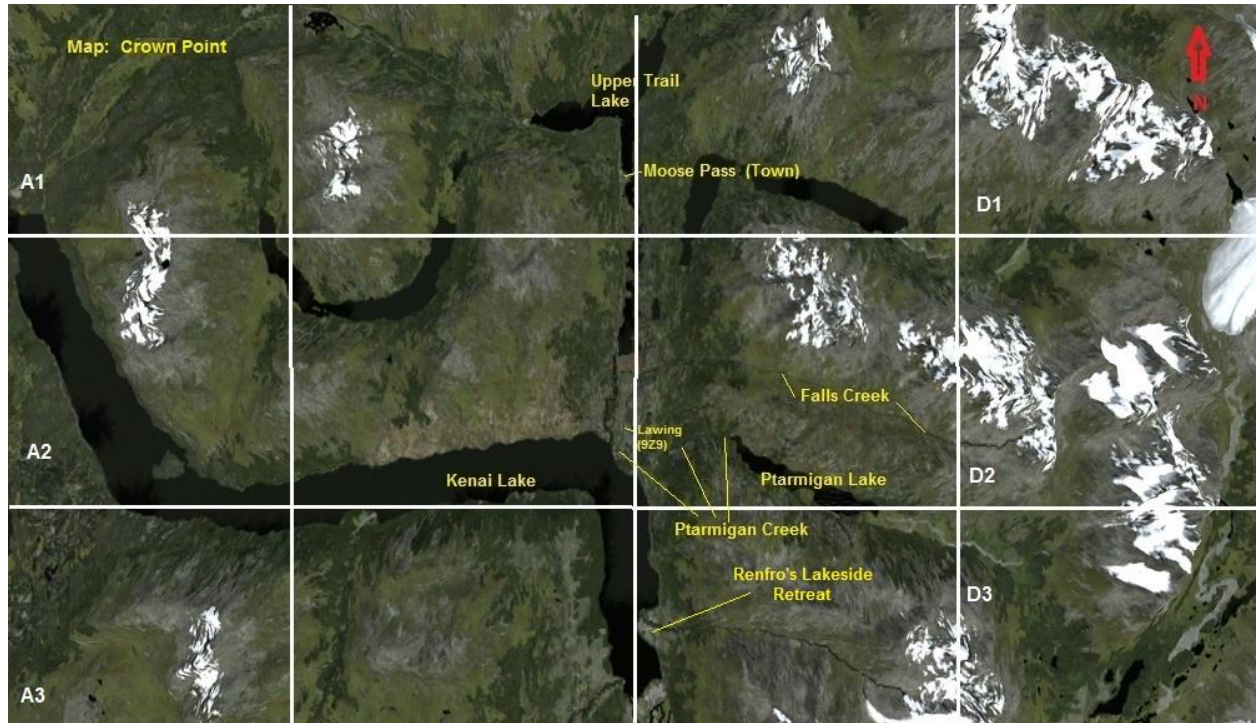
Nature of Emergency: Heart Attack.

GPS Waypoint Setting: E002H

Topographical Link (Evac point is very close to the map center, use mouse wheel to zoom in/out, hold left click to move map): [Topo Map](#)

Approach Information: Set GPS Waypoint to E002H. Fly direct or fly to 9Z9 and then fly heading of 153 degrees for 3 miles. When in area, look for large parking lot....emergency equipment is on scene. Once victim is stabilized, transport to Providence Seward Medical & Care Center (ICAO: AK01).

Local Map:



Dispatch created by Rod Jackson on 4/16/2015.