

# Cambria Icefield additional sceneries.

## Bear River Lodge helipad

Bear River Lodge is an exquisite house, built on Bear river.  
A place for rest and delectation. Very good food, fishing and hiking through wilderness.  
Often, a bear family come here for brunch ! You can see them on the opposite riverside.  
location : N 56° 5.41' - W 129° 53.39' - 10 NM North of Stewart CIRP base



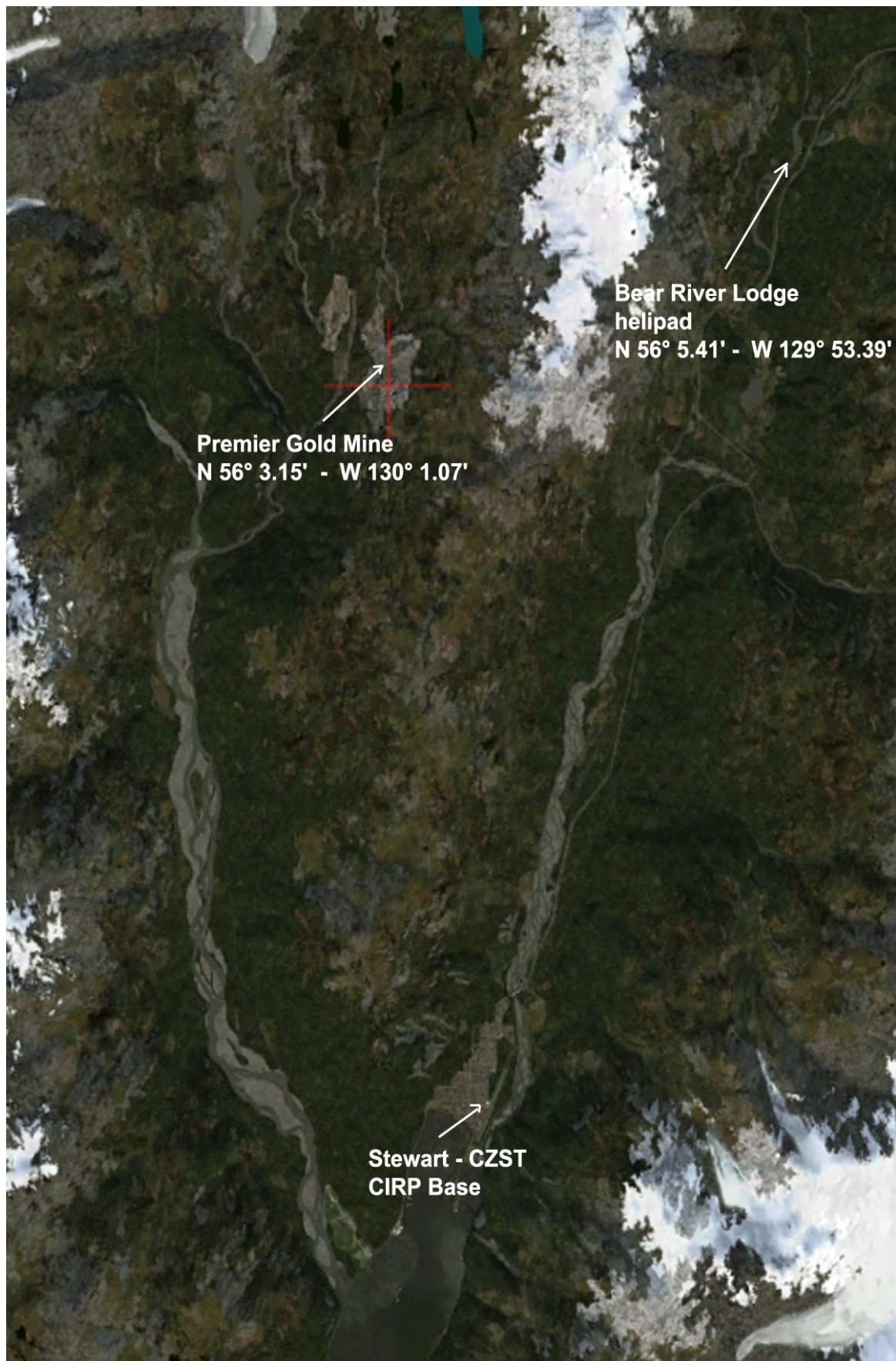
## Premier Gold Mine

Premier was a large gold mining camp in British Columbia, Canada some 18 miles from Stewart. It ran from the years 1918 to 1953 . The mine was reopened as an open pit in 1987 by Westmin Resources





location : N 56° 3.15' - W 130° 1.07' 7 NM NNW of Stewart CIRP Base



## **Installation**

Requires the Lens\_EZ\_Wilderness library

Unzip the file to a temporary folder.

Place this scenery areas main folder and it's sub level folder named "Scenery" and all files in that folder into your FSX "Addon Scenery" folder.

Start up FSX

Go to "Settings"

Then to "Scenery Library"

Click on "Add Area"

Click on "Addon Scenery"

Locate the newly installed folder for this package you just moved into your "Addon Scenery" folder of FSX

Click on the main folder only. You do NOT need to open the "scenery" folder.

Then click on "OK"

And then "OK" again.

FSX should begin to recompile your scenery library.

OR

Add them to your Misty Moorings scenery folder, if you have placed all RTMM in a unique folder

## **DISCLAIMER**

User accepts all risk associated with this scenery file. AUTHORS WILL NOT BE HELD ACCOUNTABLE FOR ANY DAMAGE TO USER SYSTEM HARDWARE.

## **COPYRIGHT and LICENCE**

This scenery is released as Freeware.

As freeware you are permitted to distribute this archive subject to the following conditions:

- The archive must be distributed without modification to the contents of the archive. Re-distributing this archive with any files added, removed or modified is prohibited.
- The inclusion of any individual file from this archive in another archive without the prior permission of the author is prohibited. This means, for example, that you may not upload an archive that uses this file set with your own scenery or include it in a package containing any other scenery without first obtaining the authors' permission.
- No charge, fee or monetary amount may be made from this archive. It's free and must remain that way!!
- The authors' rights and wishes concerning this archive must be respected.

**Copyright 2011 by Return to Misty Moorings. All Rights Reserved.**