

NBR Wilderness Tours: The Alaska Glacier Series
Mission 5: Lowell Field (00AK) to Beluga (PABG)

This is the fifth in a continuing exploration trip in "rugged" Alaskan glacier scenery. In this trip we'll depart Lowell Field (00AK) travelling along the northern side of Kenai Peninsula then crossing Cooks Inlet exploring oil rigs on the way and ending this trip at Beluga (PABG). Again, as in all of these VFR "explore the terrain" type trips this one also is intended to be a low level and scenic flight excursion.

The Route/Itinerary: Short List: 00AK-NIN-5KS-PAEN-5AK0-PABG

Departure: Lowell Field (00AK)
Optional Stop or touch and Go at Ninilchik (NIN)
Stop at Kasilof (5KS)
Stop at Kenai Municipal (PAEN)
Stop at Trading Bay Production (5AK0)
Stop at Homer (PAHO)
Destination: Beluga Airstrip (PABG)
Total Distance: 109 nm.

*** Scenery Requirements:** (Nice eye candy add-on to be able to see the oil rigs on Cook Inlet): <https://flightsim.to/file/5697/alaska-cook-inlet-oil-rig-placements> (by B Houston)

Aircraft: Asobo Savage Cub

Mission Installation:

Extract the zip file and move/place the extracted mission folder into the community folder. Start/restart the sim and this mission will be found via the Home Page > Activities > Bush Trips > **LOWELL to BELUGA**
Alaska (Savage Cub)

To uninstall simply remove the mission folder from your community folder.

Mission Duration:

Duration or time required to fly this trip will again vary depending on number of stops made and stop duration at these locations. A normal trip, travelling at a "normal speeds" and making all regular stops is @ 1'30" or so.

Season/Date/Time:

Season/date is unlocked. The default value is set to the season of Spring.
Date: April 20, 2021 and default start time set to 0800 hrs. **BUT** you can change any of these values to your desired in the Flight Conditions window prior to the starting the mission flight. (Dawn or Dusk are the nicest times to fly and can yield very pretty and interesting lighting effects).

Weather:

Weather settings are unlocked. Default is set to Live Weather but you can change this to any other preset or custom as required at any time prior to or during the flight.

MultiPlayer:

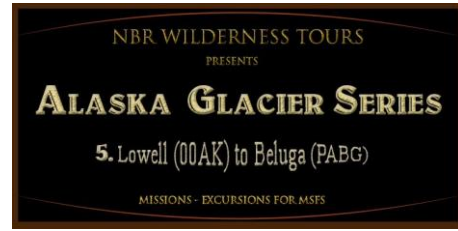
MultiPlayer is enabled for this mission so you don't have to fly in isolation. It is nice to be able to share the skies with others flying in the vicinity.

If you would rather not use the mission at all, you can still fly the route in any aircraft by using the included flight plans (.lnmpln as well as .pln formats) and/or for a real challenge fly the trip referring only to the included sky vector static map link of the route and sim landmarks for navigation.

This Alaska Glacier trip will be part of a full VA excursion at the **Misty Flying Club**.

<http://www.mistymooringflyingclub.com/>

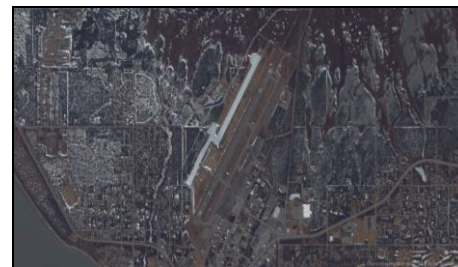
Norm Richards (NBRICH1)
April 2021



Route Overview



Departing Lowell Field (00AK)



PAEN Overview



Cook Inlet Oil Rigs/Platforms

NBR WILDERNESS TOURS: THE ALASKA GLACIER SERIES: DETAILED FLIGHT ITINERARY/PILOT'S GUIDE

Airports, route and POI covered in this Mission/excursion:

Reference links for each location if available are "[embedded](#)" in the location name:

Depart: [Lowell Field Airport \(00AK\) \(2552' x 48'\)](#)
Stop or TnG at [Ninilchik \(NIN\) \(2418' x 54'\)](#)
WP1 [Town of Kalifornsky](#)
Land at [Kasilof \(5KS\) \(2585' x 60'\)](#)
WP2 [City of Kenai](#)
Land at [Kenai Municipal Airport \(PAEN\) \(7841' x 150'\)](#)
WP3-13 Oil rig platforms on [Cook Inlet](#): (Refer to LNM FP for specific Oil Platform owners)
Land at [Trading Bay Production Airstrip \(5AK0\) \(4187' x 67'\)](#)
Destination: [Beluga Airstrip \(PABG\) \(5057 x 100'\)](#)

NOTE: For those of you who don't like "missions" per say, I have included the flight plan (both LNM and MSFS version) on which this bush trip is based as well as have included a sky vector map link for those who might want to remove any automated nav aids and navigate via static map, dead reckoning and marking land marks to ascertain position. (But make sure you grab your watch or E6B just in case: don't want to get lost!)



Hope all enjoy this MSFS expedition exploring some of the sites in Alaska.

Donate via Paypal norm_richards@hotmail.com if you wish but there is no obligation of any sort. My content will always be free for the flightsim community.

Norm Richards (NBRICH1)
April 2021