

Misty's Place 2021

An FS2020 Scenery from Return to Misty Moorings (RTMM)



Welcome to the Microsoft Flight Simulator 2020 version of Misty's Place. This was one of Brad Allen's first locations with Return to Misty Moorings. It didn't take long after the introduction of FS2020 for us to realize that all of our favorite Misty Moorings were going to have to be rebuilt from the ground up. For years, we'd had a "home base" at Brad Allen's beautifully-rendered Misty's Place, and we knew that the most important place to begin our new scenery endeavor was right at that same home base, in the same place, right where you expect it to be. Even though we're working with new tools and new technology, this is sacred ground. Whether you're already fully invested in FS2020 or you're still on the fence about it, we hope you'll see this new adaptation of Misty's Place as a familiar home.

INDEX

The Storyline: The Mythical Background of Misty's Place	Page 1
Installing Misty's Place 2021	Page 3
Season Switching: Changing Seasons at Misty's Place	Page 3
Night Lighting	Page 4
Map Overview	Page 4
Special Features of Misty's Place 2021	Page 5
NOTAMs: Known issues with Misty's Place 2021	Page 5
Summary	Page 7
Copyright and Legal Statements	Page 8

THE STORYLINE: THE MYTHICAL BACKGROUND OF MISTY'S PLACE

One summer in the late 60's, a young woman named Misty came to visit Alaska with her husband and their daughter. Though they only stayed a short while, they fell in love with Ketchikan and its dazzling natural beauty. When the time came to return to their life in the lower 48, Misty made her husband promise that they'd return someday.

Misty's husband, Cliff, was an Air Force pilot, and it wasn't long before he was sent back to the war in Southeast Asia. Cliff flew the A-1 "Skyraider," an aircraft that many people had never even heard of. Of course, Misty knew that it was old, flew close to the ground, and had some crazy nicknames like "Spad", "Sandy" and "Zorro". She also knew that her man was a great pilot, with one of the hardest jobs in any cockpit during the war: close air support for search and rescue missions in hostile territory. She understood that his work was especially dangerous, and the thing she feared most was opening her front door to find the chaplain and his assistant in their dress blues.

And then it happened.

While her daughter, Mindy, played upstairs, Misty sat in her living room, listening silently as the chaplain told her that Cliff was missing in action. He said that Cliff had been shot down during a "Sandy" mission that originated at Nakhon Phanom Royal Thai Air Force Base. "NKP" was the hub of all Air Force A-1 missions and his aircraft hadn't returned to base. Cliff's wingman made it back to base and reported heavy contact with the enemy. He heard Cliff call out a "Mayday" but never saw a parachute. Several attempts were made to locate the missing pilot but only the wreckage was spotted. Was he killed in the crash? Or had he survived and been captured by the enemy? The Air Force didn't have a clue.

Misty took the news hard. She held out hope for good news, but it never came. After the war ended in 1975, she and Mindy left their small home near the base and headed back to Ketchikan. With what little savings she had, and the balance of her late husband's estate, Misty bought a small piece of land at the mouth of Bostwick Creek on Gravina Island. It was nothing but grass and trees, but Misty had a vision: to create a place of happiness and camaraderie. They broke ground in the summer of 1976.

Misty worked tirelessly for the next year. She cleared out some of the land and made a small dirt airstrip along the water's edge. She built a cottage for visitors, and before long, a friend named Joe came along and helped her build a cozy little bar and grill, which Mindy named, appropriately, "Misty's Place." Joe helped out around the property and did most of the construction on a second-hand, Quonset-style hangar where he'd sometimes repair an airplane or two. Word spread around the Ketchikan area of a new place where pilots were welcome to stay for a small fee, as long as they helped Misty around the place.

A lot of pilots came and went, and the reputation of the "Nice Lady" with the beautiful smile spread. Joe's repair business helped fund a bigger hangar, and once that was finished, his repair business started operating full time. When Misty started selling fuel, quite a few of the local pilots interested in this tiny hangout began to base their "bush" operations there.

These days, Joe takes care of maintenance and groundskeeping. Mindy handles operations from the radio to refueling, and her husband, an ex-Air Force aircraft mechanic and a great pilot in his own right, runs the airframe and powerplant repair shop. Last year, their daughter won a STOL competition in a SuperCub she rebuilt with her dad. They hired another mechanic fresh out of the Navy, and while nobody's sure about the guy, he has a rare gift for finding impossible-to-get parts.

Misty mostly tends bar and works the grill. Every now and then, when she thinks no one's looking, you might catch her kissing her fingertips and pressing them to the picture of the smiling, young Skyraider pilot that hangs behind the bar.

It's not an easy life in the Alaskan backcountry, and while Misty wouldn't have chosen the path that led her here, she's happy with how it's all worked out. Just last week, as she watched her granddaughter swing a prop for a visiting pilot, she realized that this little community will live on after she's gone.

Of course, it'll always be "Misty's Place."

INSTALLING MISTY'S PLACE 2021

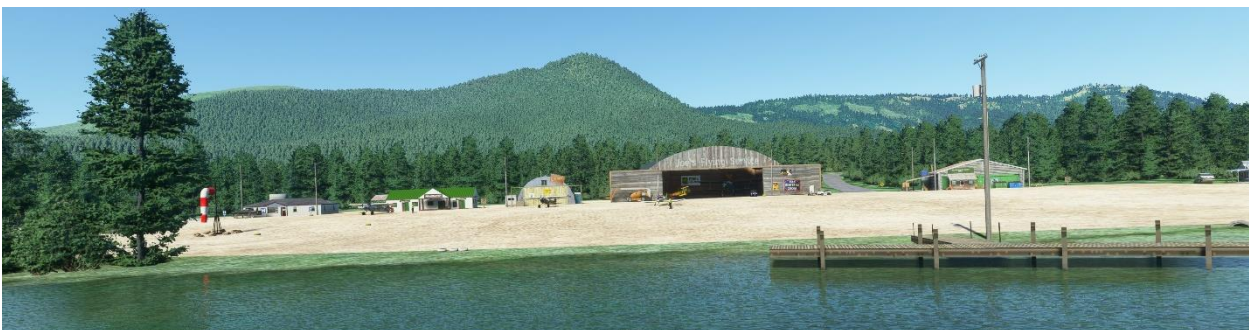
NOTE: Ensure you have installed the RTMM object library (rtmm-objectlib-v0.4.0 or later) and all World Updates.

1. Open the RTMM_Mistys_Place_2021.zip file.
2. Extract the rtmm-airport-pf20-mistysplace-v1.1 folder to your FS2020 Community folder.

SEASON SWITCHING: CHANGING SEASONS AT MISTY'S PLACE



At present, FS2020 can switch between snow and no-snow both automatically and by user settings. This capability is to be expanded in future versions, and as such, a separate Season Switching tool is no longer necessary.

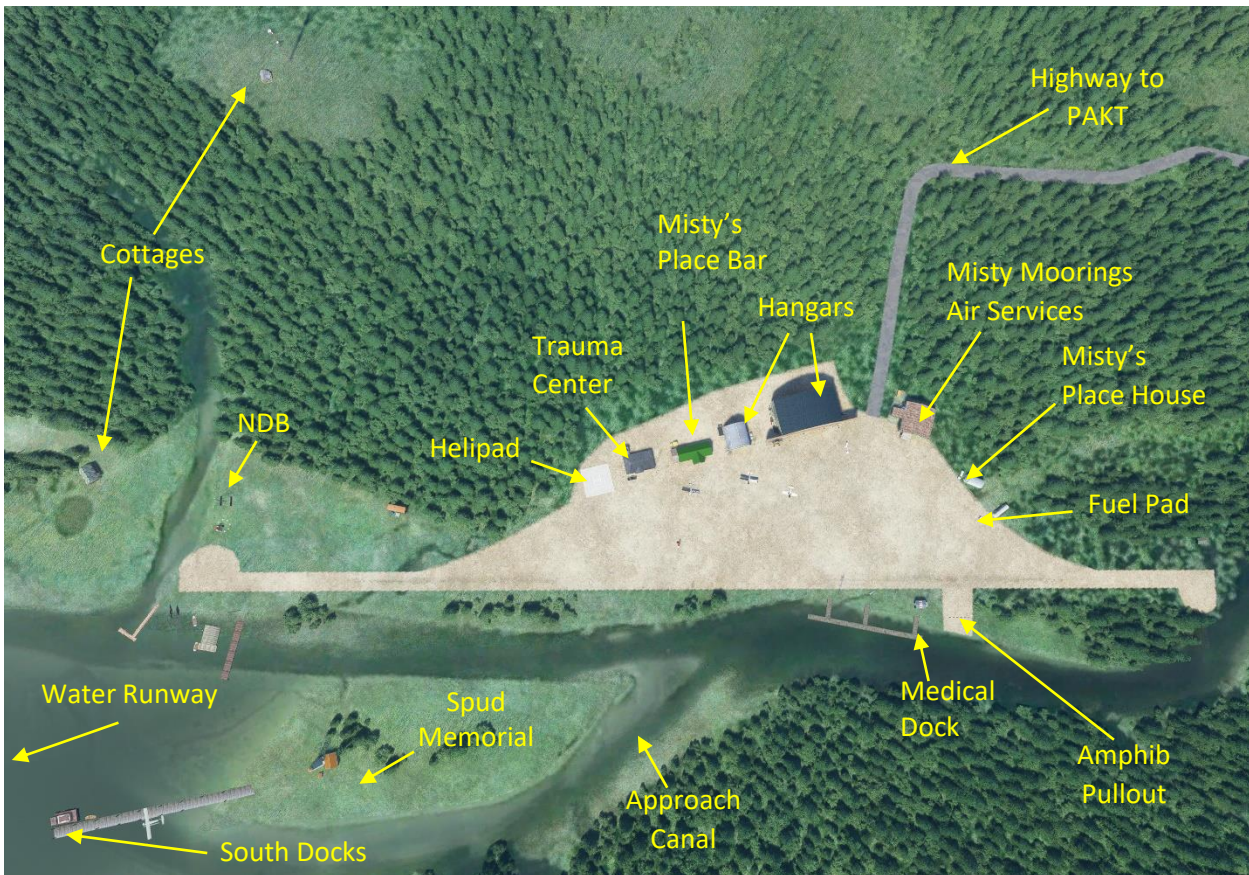


NIGHT LIGHTING



Night lighting is a work in progress. There is lighting on the flight line and some buildings have emissive textures, but the lighthouse doesn't work, and the runway/helipad lighting is not yet in place. These will be added in a future build.

MAP OVERVIEW OF MISTY'S PLACE 2021



Misty's Place is located in the Bostwick Inlet about 6 miles from Ketchikan International, PAKT. The ICAO code for the airstrip is PF20, and for the seaplane base is PF21.

SPECIAL FEATURES OF MISTY'S PLACE 2021

NOTE: More special features are planned; this is what's already in place.

1. Seaplane Docks: There are two seaplane docks at Misty's Place. One is out near the lighthouse at the south end of the field, and the other is a Medical Dock that is used for the RTMM Medical Dispatches. (The boat docks are still there for when drivable boats become available.) Please see the NOTAMs section of this readme.
2. The fuel station located near Misty's House is active, so you can pull up to it and, "fill her up."
3. There is an NDB located at the south end of the runway. Its identifier is MP, channel 220.
4. The Misty's Place complex consists of a lighthouse area, Misty's House, Misty's Place Bar and Grill, the 2 hangars, a medical trauma center, and an operations office. There are also a couple of cabins for rent.
5. There is a helipad for our helicopter pilots.
6. There are two windsocks on the complex.
7. There is a special memorial site for Guy "Spud" Maricich.

NOTAMS: KNOWN ISSUES FOR MISTY'S PLACE 2021

1. The runway is 1,804 feet long, some 230 feet shorter than it was in FSX/P3D. This is because of the differences in terrain between the older scenery and FS2020, and it was unavoidable.

2. Seaplane movement to and from the medical dock:

FS2020 marine capabilities are still rather limited. Water rudders tend to be minimally effective and there is little resistance to slow you down, making control in close quarters especially difficult. We recommend using a 3rd party utility like one of the "pushback helpers" available on [flightsim.to](https://www.flightsim.to).

On ingress to the inner dock, maintain enough speed for steering and stay in the middle of the water, to the left of the red markers. As you approach the last red marker and the white sign is on your left, use the pushback helper tool to come to a stop at just to the left of the last red marker. (Choosing "tug" and use the forward-left-right-reverse buttons to pull forward alongside the dock. Adjust the tug speed using the slider next to the "tug" button.) Stay close to the dock since there is a small dry spot that will hang you up about 20 feet out towards creek center.

For egress, use the "pushback helper" to back away (reverse) from dock and as you clear dock select Left to swing your back end to the left until hits shore then stop and jockey forward and back to slowly swing your nose so you can proceed forward. There are numerous ways to get yourself turned around upon leaving the dock. You may need "pushback helper" to turn left between the red buoy

and the sign during egress. They continue to keep in creek center while making sure red buoy is to your left.

3. The amphibian ramp has been reopened.

4. The water in the canals is not level. This is a result of the differences in terrain between the Tongass Fjords addon and FS2020, which uses more recent, higher resolution data. In truth, Bostwick Creek is not suitable for float plane traffic, but we wanted to retain the familiar layout of the FSX/P3D version. Unfortunately, that left us with a choice between flattening the whole area and accepting a small area of sloped water.

5. The seaplane landing area is no longer marked with lighted buoys. This was intentional. The USCG and ICAO recommend against marking seaplane landing areas except in high traffic areas (such as Ketchikan Harbor) as doing so unnecessarily restricts seaplane operations.

6. There are visible seams in the water and the surrounding scenery. These are caused by the terrain tiling method used in FS2020, and we hope that Asobo will address this in a future update.

7. The iconic “Misty’s House” cottage is in for refurbishment. A new model for this and several other buildings are being worked on and will be added in a later update.

8. The campfire is missing. At present, FS2020 doesn’t support fire or smoke effects.

9. The initials on Spud’s memorial are only visible when the camera is placed very close. This is because the FS2020 rendering engine is different from the ones used in FSX and P3D.



SUMMARY

Welcome to Misty's Place 2021, our renovated “home”. Now join us at the Misty's Place Bar and Grill on the [FORUM](#). Discuss Misty's Place or anything else that comes to mind. Thank you for being a part of Return to Misty Moorings.



COPYRIGHT AND LEGAL STATEMENTS

Legal Stuff

Return to Misty Moorings (RTMM) is a freeware site made up of a volunteer team that creates fascinating and beautiful scenery locations in the RTMM "area". The RTMM area is currently defined as southern Alaska (bounded by Anchorage to the north and Homer to the west), southwestern British Columbia and western Washington state.

=====

DISCLAIMER

User accepts all risk associated with this scenery file. AUTHOR WILL NOT BE HELD ACCOUNTABLE FOR ANY DAMAGE TO USER SYSTEM HARDWARE.

=====

COPYRIGHT and LICENSE

This scenery is released as Freeware. As freeware you are permitted to distribute this archive subject to the following conditions:

- The archive must be distributed without modification to the contents of the archive. Re-distributing this archive with any files added, removed or modified is prohibited.
- The inclusion of any individual file from this archive in another archive without the prior permission of the author is prohibited. This means, for example, that you may not upload an archive that uses this texture set with your own scenery or include it in a package containing any other scenery without first obtaining the authors' permission.
- No charge, fee or monetary amount may be made from this archive. It's free and must remain that way!!
- The authors' rights and wishes concerning this archive must be respected.

Copyright 2021 by Return to Misty Moorings. All Rights Reserved

=====

Microsoft Flight Simulator © Microsoft Corporation. "Misty's Place 2021" was created under Microsoft's "Game Content Usage Rules" using assets from Microsoft Flight Simulator and it is not endorsed by or affiliated with Microsoft.

<https://www.xbox.com/en-US/developers/rules>